



**T/LE LIKE
NEVER BEFORE**

MATT | 800X1600 MM

SUITABLE APPLICATIONS



Residential



Commercial
Building



Hotel,
Restaurant



Hospital



Airport



School,
College



Gymnasium



Hall &
corridor



Mall & Super
Market



Industry



Spa



Religious
Place

TECHNICAL SPECIFICATIONS



Long
Durability



Easy to
Clean



Impact
Resistance



Hygienic
Surface



Fire
Resistance



Chemical
Resistance



Frost
Resistance



Low Water
Absorption



Dimensional
Stability



Easy
Installation



Thermal
Resistance



Crazing
Resistance

INTERACTIVE GUIDE




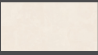
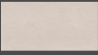






Please Click
the corresponding tiles
to view specific tile details.



Click on the Logo
to return to the previous
index page.

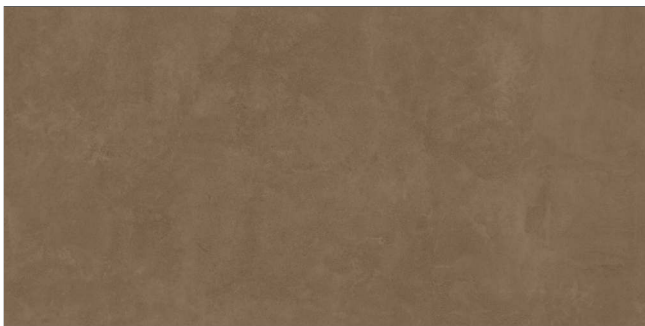
INDEX

	CONCRETE COFFEE	05
	CONCRETE GREY	08
	CONCRETE GRIS	11
	CONCRETE IVORY	14
	DOTS BEIGE	17
	DOTS GREY	20
	DOTS NERO	23
	NATURAL WOOD	26
	TECHNICAL SPECIFICATION	29



CONCRETE COFFEE
MATT | 800x1600 MM



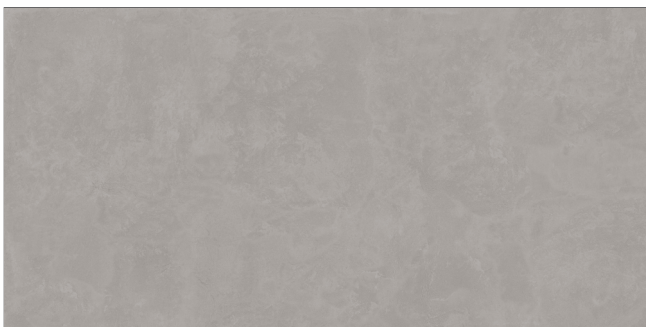
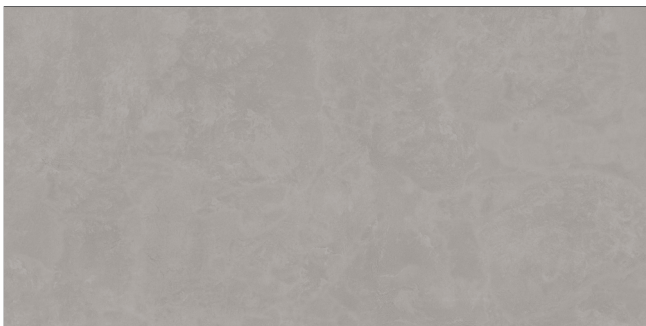


CONCRETE COFFEE
MATT | 800x1600 MM



CONCRETE GREY
MATT | 800x1600 MM





CONCRETE GREY

MATT | 800x1600 MM



CONCRETE GRIS
MATT | 800x1600 MM





CONCRETE GRIS

MATT | 800x1600 MM



CONCRETE IVORY
MATT | 800x1600 MM





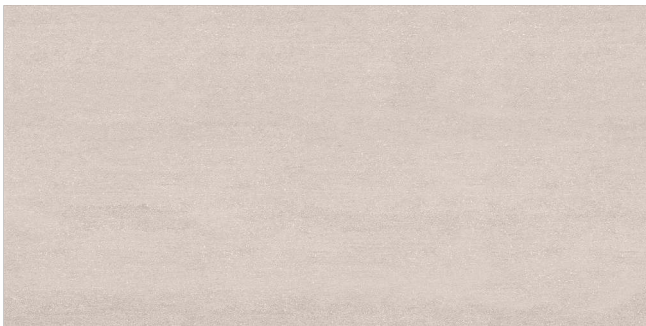
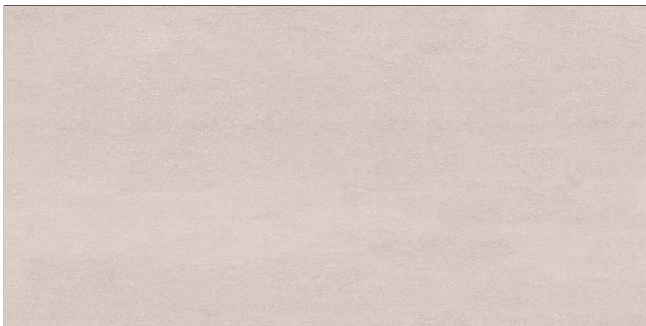
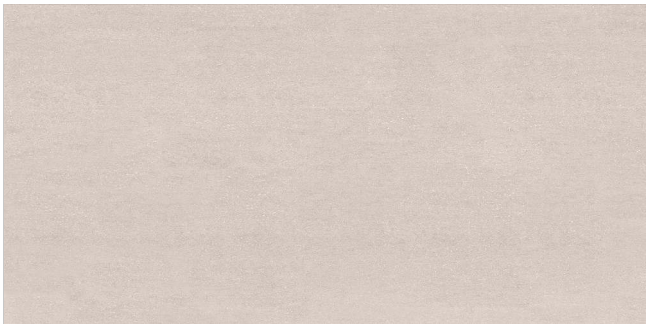
CONCRETE IVORY

MATT | 800x1600 MM



DOTS BEIGE
MATT | 800x1600 MM





DOTS BEIGE

MATT | 800x1600 MM



DOTS GREY
MATT | 800x1600 MM





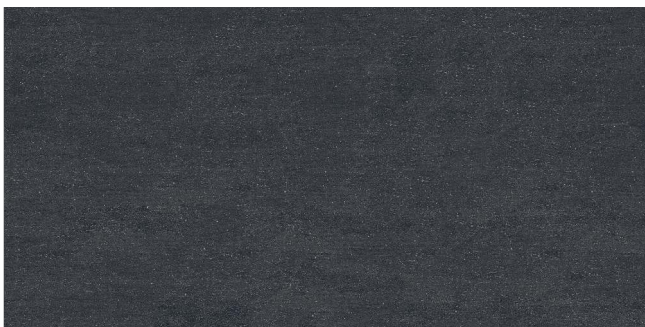
DOTS GREY

MATT | 800x1600 MM



DOTS NERO
MATT | 800x1600 MM





DOTS NERO

MATT | 800x1600 MM



NATURAL WOOD
MATT | 800x1600 MM





NATURAL WOOD
MATT | 800x1600 MM

TECHNICAL SPECIFICATIONS

Sr no.	Characteristics	International Std. ISO 13006 / En 14411 Group Bla	Specifications of Metro	Method Of Testing
Dimensions & Surface Quality				
1	Length	±0.6%	±0.1%	ISO 10545-2
2	Thickness	±5.0%	±3.0%	ISO 10545-2
3	Straightness Of Sides	±0.5%	±0.1%	ISO 10545-2
4	Rectangularity	±0.5%	±0.1%	ISO 10545-2
5	Surface Flatness	±0.5%	±0.1%	ISO 10545-2
6	Glossiness (Only For Polished Products)	Declared By Manufacturer	92-105%	ISO 2813(Gloss Meter)
7	Surface Quality	Min. 95% Tiles Should Be Free From Defects	Min. 98% Tiles Are Free From Defects	ISO 10545-2
Physical Characteristics				
8	Water Absorption	E≤ 0.50%	≤ 0.50%	ISO 10545-3
9	Moh's Hardness	≥ 6	≥ 6	ISO 10545-3
10	Moisture Expansion	Nil	Nil	ISO 10545-10
11	Abrasion Resistance	Declared By Manufacturer	Pei 3-5 (Depend On Product)	ISO 10545-7
Mechanical Characteristics				
12	Flexural Strength (MOR)	≥ 35 N/mm ² (350 Kg/cm ²)	≥ 37 N/mm ² (370 Kg/cm ²)	ISO 10545-4
13	Breaking Strength	1300 Newton	2000 Newton	ISO 10545-4
14	Impact Resistance	Declared By Manufacturer	No Indentation or Cracking	ISO 10545-5
Safety Characteristics				
15	Skid Resistance(Dynamic Friction Coefficient)	≥ 0.4	≥ 0.4	ISO 10545-17
16	Density	≥ 2.0 Gm/cc	≥ 2.3 Gm/cc	DIN 51082
Thermo Photo Characteristics				
17	Thermal Shock Resistance	Resistant to 10 Cycles	Pass Min. 10 Cycles	ISO 10545-9
18	Frost Resistance	Frost Proof	Need To Comply With The Standard	ISO 10545-12
19	Coefficient of Linear Thermal Expansion	9x10 ⁻⁶ K ⁻¹	> 5.86x10 ⁻⁶ K ⁻¹	ISO 10545-8
20	Color Resistance to UV Light	Resistant	Resistant	ISO 10545-16
Chemical Characteristics				
17	Chemical Resistance: Household Chemicals & Swimming Pool Salts	Min. Class - Gb	Conform to Classes - Ga	ISO 10545-13
18	Chemical Resistance: Low Concentration Acids & Alkalis	Min. Class - Glb	Conform to Classes - Gla	ISO 10545-13
19	Chemical Resistance: High Concentration Acids & Alkalis	Min. Class - Ghb	Conform to Classes - Gha	ISO 10545-13
20	Stain Resistance	Min. Class - 3	Conform to Classes - 4	ISO 10545-14

Packing Details:

Tile Size	No. of Tiles Per Box	Coverage Area (Approx.) (Sq. Mtrs.)	Coverage Area (Approx.) (Sq. Mtrs.)	Box Weight (Approx.) (Kgs.)
800mm X 1600mm	2 pcs.	2.56 sq. Mtr	27.55 sq. Ft	52 kgs